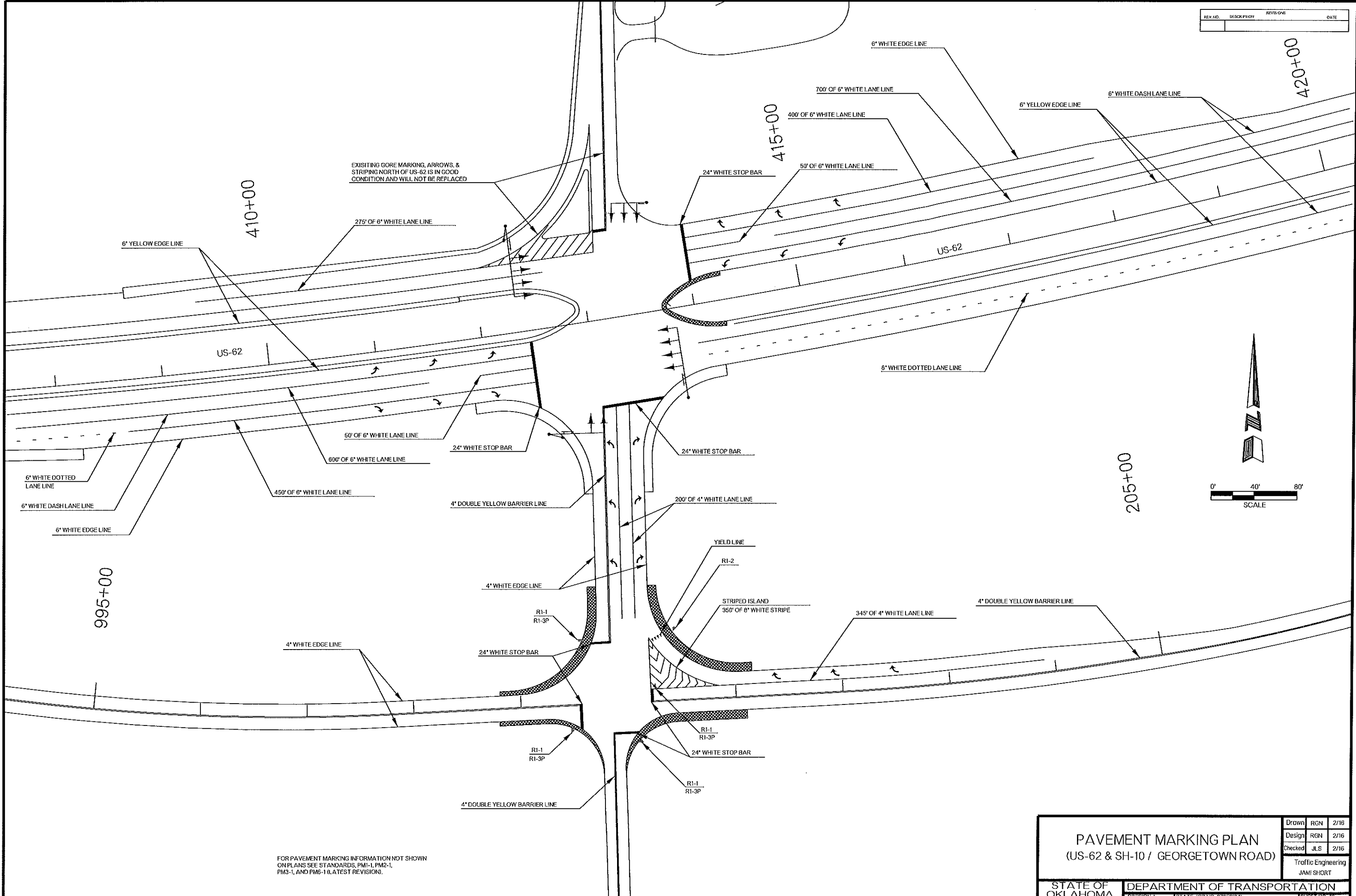


REV. NO.	DESCRIPTION	REVISIONS	DATE



EXISTING GORE MARKING, ARROWS, & STRIPING NORTH OF US-62 IS IN GOOD CONDITION AND WILL NOT BE REPLACED

FOR PAVEMENT MARKING INFORMATION NOT SHOWN ON PLANS SEE STANDARDS, PM1-1, PM2-1, PM3-1, AND PM6-1 (LATEST REVISION).

PAVEMENT MARKING PLAN (US-62 & SH-10 / GEORGETOWN ROAD)		Drawn RGN 2/16
		Design RGN 2/16
		Checked JLS 2/16
		Traffic Engineering JAMI SHORT
STATE OF OKLAHOMA	DEPARTMENT OF TRANSPORTATION	
DIVISION 1	STATE JOB NO. 27958(04)	SHEET NO. 72